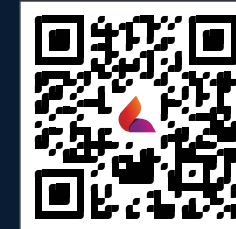




Kanakia Spaces Realty Pvt. Ltd.  
CTS No. 101,  
Behind Dr. L. H. Hiranandani Hospital, Tirandaz,  
Powai, Mumbai, Maharashtra 400076, India  
Tel: 91-22-6726 6666 / 7777  
Email : [customercare@kanakia.com](mailto:customercare@kanakia.com)




For MahaRERA  
QR Code scan this code

There's a place  
nestled between  
the mountains  
and beyond  
your imagination...

KANAKIA  
**Silicon Valley**  
Powai

Kanakia Future City shall now known as Kanakia Silicon Valley @Powai

 MahaRERA Registration No(s): Kanakia Future City A- P51800018007; Kanakia Future City B- P51800018113; Kanakia Future City C- P51800018008; Kanakia Future City D- P51800017413, Kanakia Future City E- P51800034748 & Kanakia Future City F- P51800047422 are available at website <http://maharera.mahaonline.gov.in>. \*T&C Apply.

Disclaimer: The whole project Kanakia Future City shall now known as Kanakia Silicon Valley @Powai is a multiphase project and at present five wings are registered with MahaRERA under the name Kanakia Future City A, Kanakia Future City B, Kanakia Future City C, Kanakia Future City D and Kanakia Future City E, respectively. The later phases of the Project are not yet registered under MahaRERA. The photographs, images, features, drawings, sketches, renderings, elevation, pictorial, graphical representations, specifications, illustrations, other information etc. contained in these material are for pure imagination/ and does not represent what will come in the Project. They are indicative of the kind of development proposed in the Project / Whole Project and its finality is subject to the approval of the respective authorities or as required by the developer in the interest of continuing improvement, without prior notice or obligation at their sole discretion. The clubhouse elevation shown is indicative and conceptual artist's impression. None of the aforementioned are indicative of how the Whole Project or any part thereof looks at present and/or may eventually look in future and/or may be designed, constructed and/or completed. This printed material is for representation purpose only and does not constitute an offer and / or contract of any type between the developer and the Viewer. Any purchaser of this development shall be governed by the terms and conditions of the Agreement for Sale entered into between the parties and no details mentioned in these printed material shall in any way govern such transaction. The Project is mortgaged in favour of IDBI Trusteeship Services Limited for funding by Piramal Capital & Housing Finance Limited and the buyer will be required to obtain a no objection certificate prior to entering in to Agreement for Sale of any unit/flat in the project. \*The 4BHK advertised is nothing but a combination of 2+2BHKs the developer shall make necessary changes as per GOVT/EMC norms and statutory requirements. -- = approx. \*T&C apply.

The photographs, images, features, drawings, sketches, renderings, elevation, pictorial, graphical representations, specifications, illustrations, other information etc. contained in these material are for pure imagination/ and does not represent what will come in the Project. They are indicative of the kind of development proposed in the Project / Whole Project and its finality is subject to the approval of the respective authorities or as required by the developer in the interest of continuing improvement, without prior notice or obligation at their sole discretion. The building elevation shown is indicative and conceptual artist's impression. None of the aforementioned are indicative of how the Whole Project or any part thereof looks at present and/or may eventually look in future and/or may be designed, constructed and/or completed. This printed material is for representation purpose only and does not constitute an offer and / or contract of any type between the developer and the Viewer. Any purchaser of this development shall be governed by the terms and conditions of the Agreement for Sale entered into between the parties and no details mentioned in these printed material shall in any way govern such transaction. The Project is mortgaged in favour of IDBI Trusteeship Services Limited for funding by Piramal Capital & Housing Finance Limited and the buyer will be required to obtain a no objection certificate prior to entering in to Agreement for Sale of any unit/flat in the project. \*T&C apply.

The photographs, images, features, drawings, sketches, renderings, elevation, pictorial, graphical representations, specifications, illustrations, other information etc. contained in these material in respect of the amenities are for pure imagination/ and does not represent what will come in the Project. They are indicative of the kind of development proposed in the Project / Whole Project and its finality is subject to the approval of the respective authorities or as required by the developer in the interest of continuing improvement, without prior notice or obligation at their sole discretion. None of the aforementioned are indicative of how the Whole Project or any part thereof looks at present and/or may eventually look in future and/or may be designed, constructed and/or completed. This printed material is for representation purpose only and does not constitute an offer and / or contract of any type between the developer and the Viewer. Any purchaser of this development shall be governed by the terms and conditions of the Agreement for Sale entered into between the parties and no details mentioned in these printed material shall in any way govern such transaction. The Project is mortgaged in favour of IDBI Trusteeship Services Limited for funding by Piramal Capital & Housing Finance Limited and the buyer will be required to obtain a no objection certificate prior to entering in to Agreement for Sale of any unit/flat in the project. \*T&C apply.

The photographs, images, features, drawings, sketches, renderings, elevation, pictorial, graphical representations, specifications, illustrations, other information etc. contained in these material are for pure imagination/ and does not represent what will come in the Project. The lake view shown in the printed material is taken from the project location from a height of 90 meter by help of a drone and is not indicative of the actual view that may eventually look from the Flat. The views shown in the picture may vary over period of time and does not guarantee the same. This printed material is for representation purpose only. The location of the other residential structures and public places, etc., shown in the printed material are not been constructed by our Company but are constructed by various other developers and builders who are not connected with our Company. These images of other residential structures and public places are included in the printed material so that prospective buyers get a fair idea of the landscape in and around the general macro-region of the Whole Project. These printed material does not constitute an offer and / or contract of any type between the developer and the Viewer. Any purchaser of this development shall be governed by the terms and conditions of the Agreement for Sale entered into between the parties and no details mentioned in these printed material shall in any way govern such transaction. The Project is mortgaged in favour of IDBI Trusteeship Services Limited for funding by Piramal Capital & Housing Finance Limited and the buyer will be required to obtain a no objection certificate prior to entering in to Agreement for Sale of any unit/flat in the project. \*T&C apply.

The photographs, images, features, drawings, sketches, renderings, elevation, pictorial, graphical representations, specifications, illustrations, other information etc. contained in these material are for pure imagination/ and does not represent what will come in the Project. The city view shown in the printed material is taken from the project location from a height of 90 meter by help of a drone and is not indicative of the actual view that may eventually look from the Flat. The views shown in the picture may vary over period of time and does not guarantee the same. This printed material is for representation purpose only. The location of the other residential structures and public places, etc., shown in the printed material are not been constructed by our Company but are constructed by various other developers and builders who are not connected with our Company. These images of other residential structures and public places are included in the printed material so that prospective buyers get a fair idea of the landscape in and around the general macro-region of the Whole Project. These printed material does not constitute an offer and / or contract of any type between the developer and the Viewer. Any purchaser of this development shall be governed by the terms and conditions of the Agreement for Sale entered into between the parties and no details mentioned in these printed material shall in any way govern such transaction. **The Project is mortgaged in favour of IDBI Trusteeship Services Private Limited for funding by Piramal Capital & Housing Finance Limited & Piramal Enterprises Ltd and the buyer will be required to obtain a no objection certificate prior to entering into Agreement for Sale of any unit/flat in the project. \*T&C apply.**

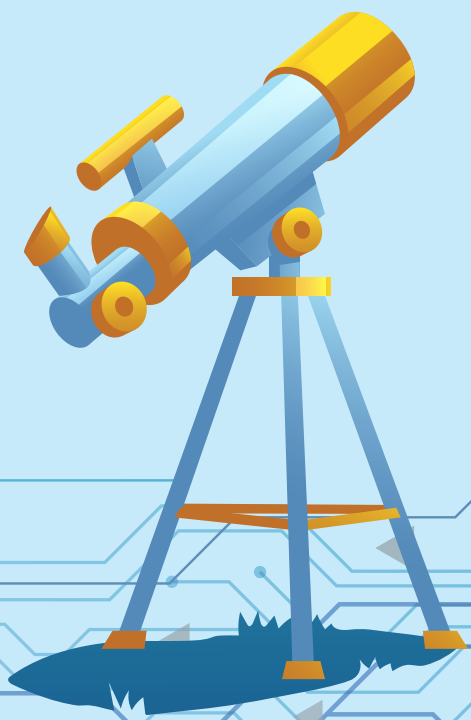
KANAKIA  
**Silicon Valley**  
Powai

Everything future, everything here



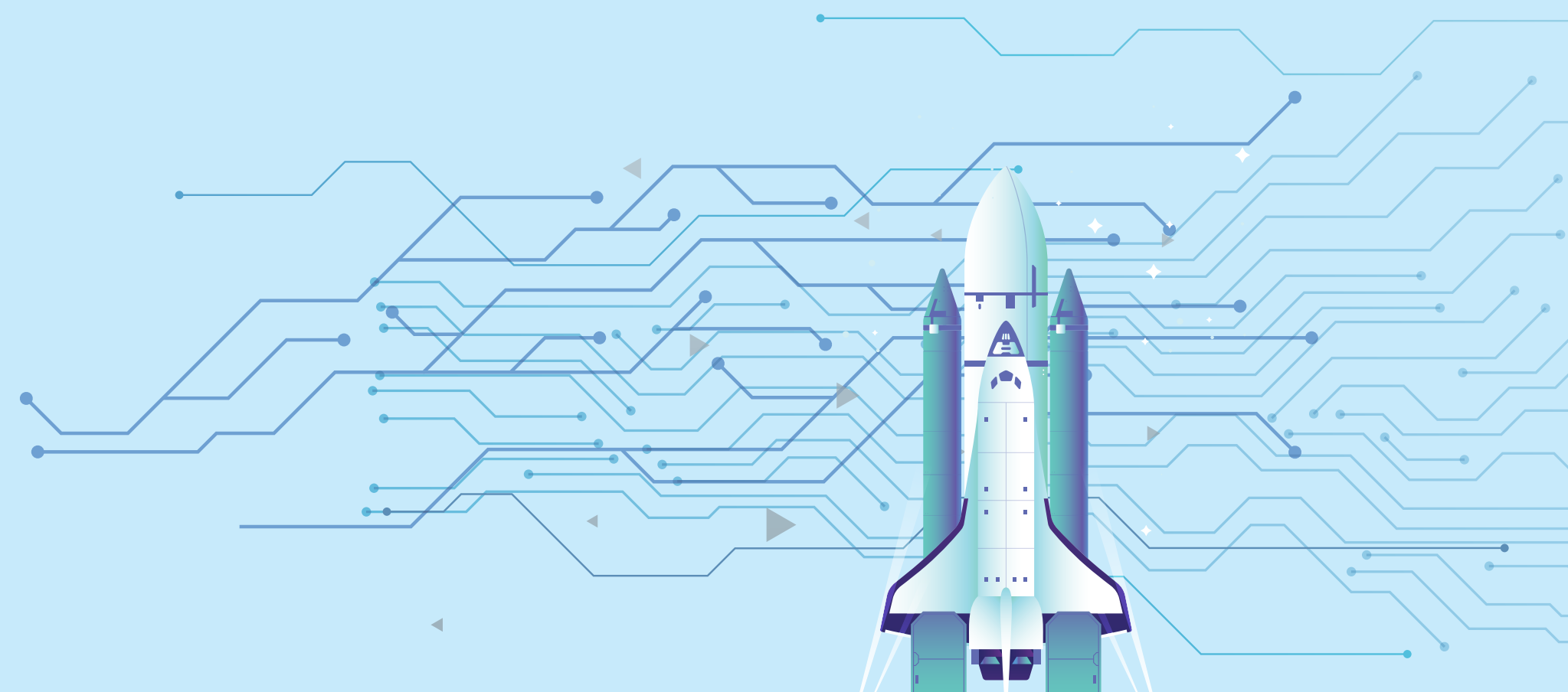
Imagine a place that's like no other. Imagine a place where the only limits to your imagination are in your mind. Imagine a place that's a tribute to legendary disrupters and innovators.

Where the future arrives as surely as dawn. Where else, but Silicon Valley.



Where  
possibilities are  
as vast as  
the universe...

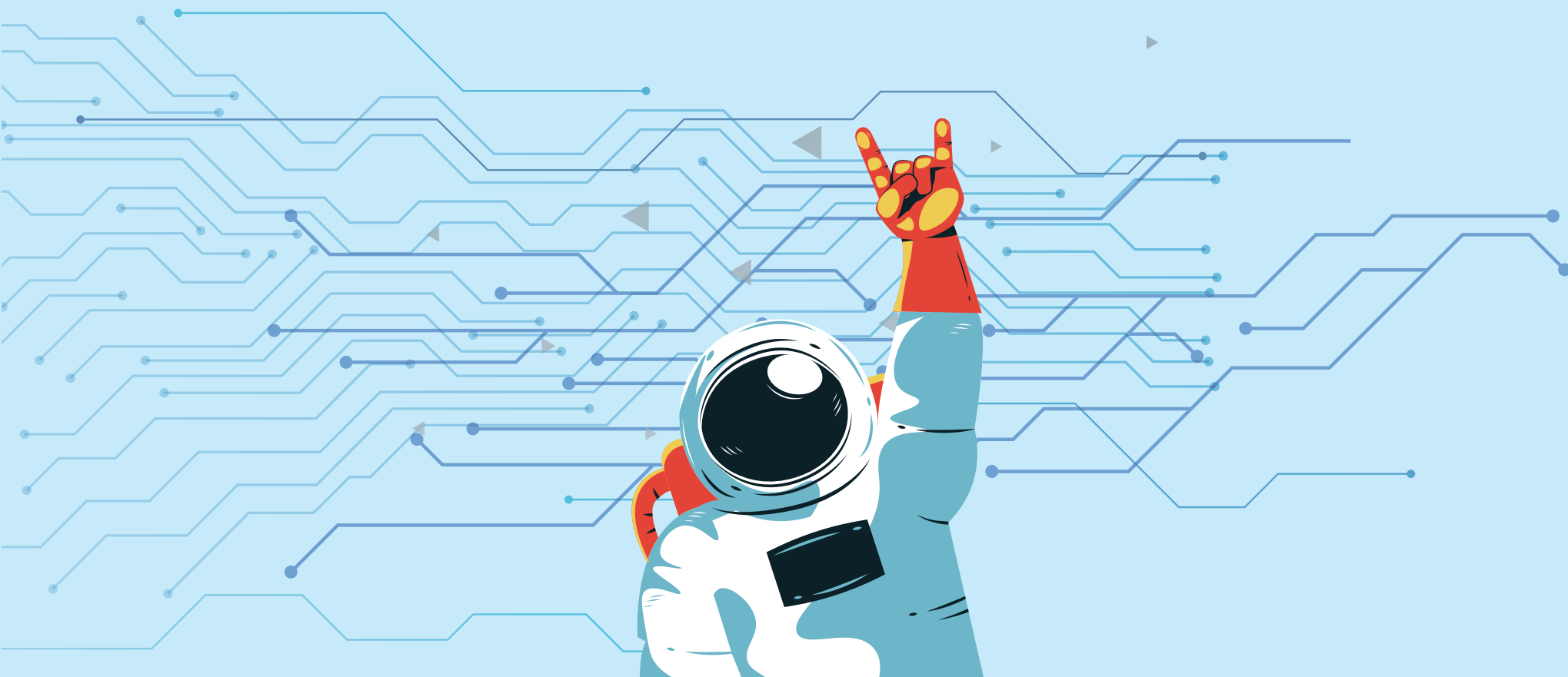
Imagine having a home in an environment where thinking big is a way of life. Where every amenity is another stepping stone to the Future



Where  
space is just  
another frontier  
to conquer...



Imagine living in the midst of innovation, disruption, life-changing ideas,  
game-changing technologies...  
Where thinking out-of-the-box is a way of life and dreaming  
out-of-the-world is an everyday activity



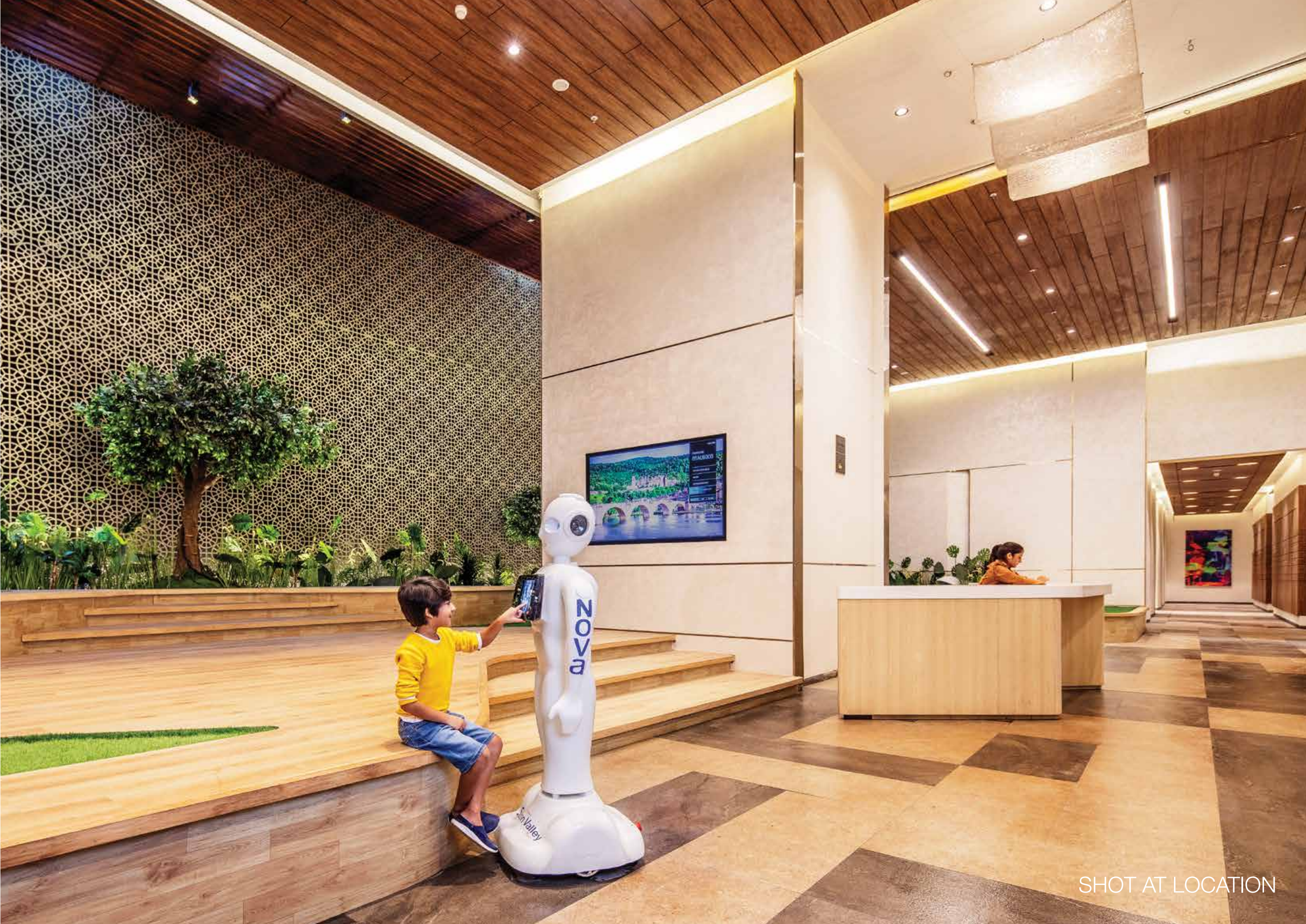
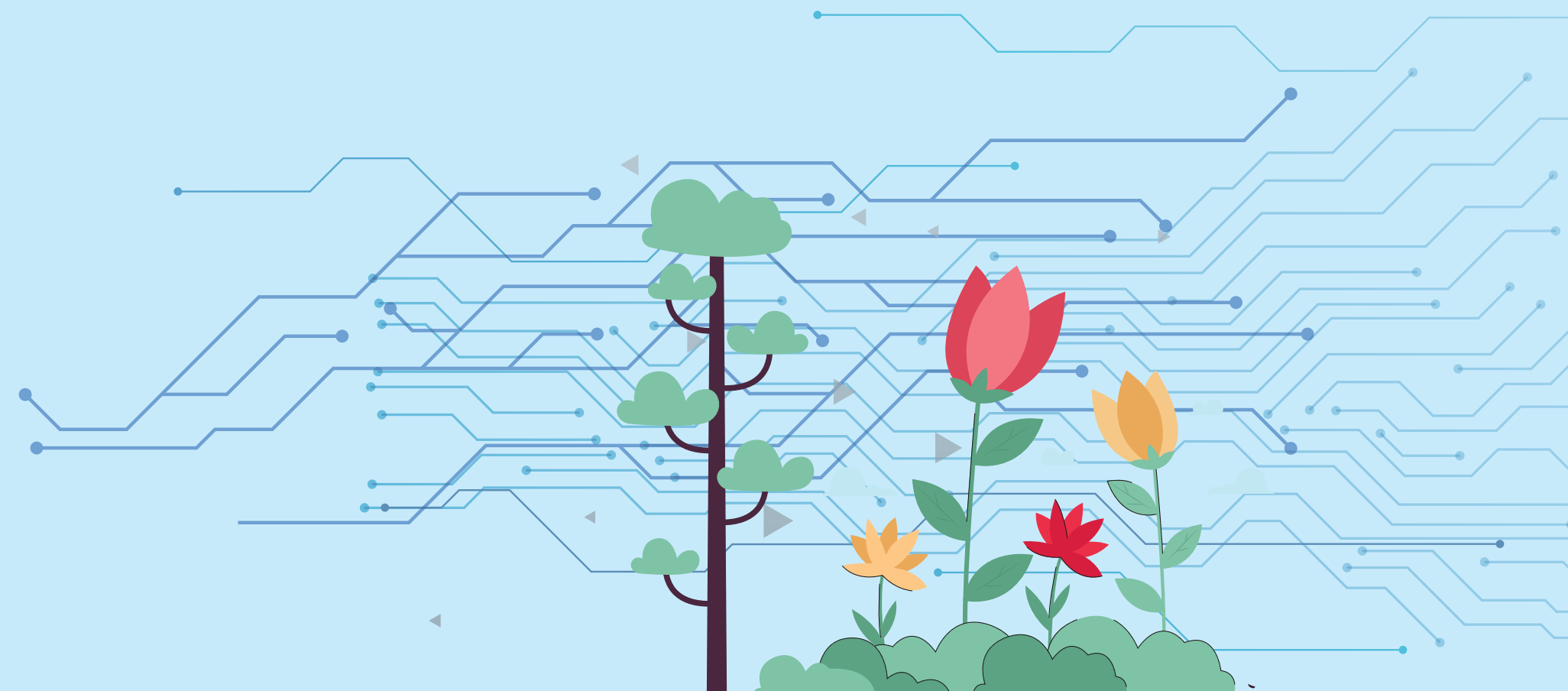
Where  
unknown  
galaxies are yours  
to discover...



# Where nature thrives as the future arrives...

Imagine a place that's surrounded by nature yet has a panoramic view  
of the new, of tomorrow.

Where greenery and technology are next door neighbours.





# Where delight and wonderment are a daily occurrence

A veritable wonderland, for families to be entertained, amused and amazed. Simulation pods, play stations, virtual reality bays...  
The future of quality time has arrived.



# The Clubhouse

SHOT AT LOCATION



# Where you get a ringside view of future technologies

A space dedicated just to launch new gadgets, new tech,  
new electronics....all things new. Test drive the future, first.



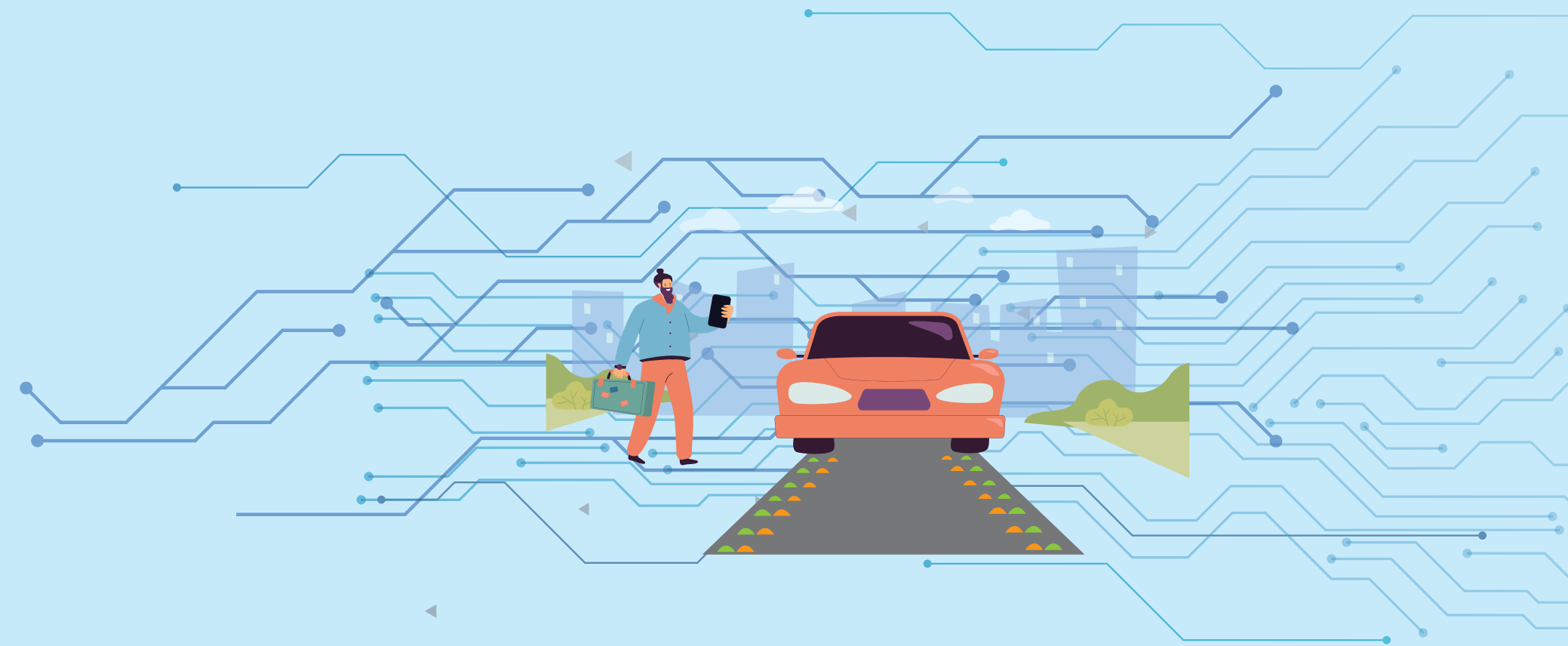
# The Launch Pad

Representative Image

# Where every drive in seems like a take-off

The driveway is not a drive way, it's a runway of floor lights that illuminates the entry way like a tarmac.

Because coming home should always feel larger than life.



# The Runway



## Powai - Where your world Converges

Silicon Valley is a pivotal development of grandeur, technology and environment, bringing you homes that promise an exemplary lifestyle. Set right in the heart of Mumbai's most desirable residential district, offering stunning views across Powai Lake; it makes for a living experience like no other, with easy connectivity to the best of Mumbai.





	<ul style="list-style-type: none"> <li>• Hiranandani Hospital 1 min</li> <li>• Seven Hills Hospital 20 min</li> <li>• Godrej Memorial Hospital 25 min</li> </ul>		<ul style="list-style-type: none"> <li>• D-Mart 5 min</li> <li>• Powai Galleria 5 min</li> <li>• Powai Plaza 5 min</li> </ul>
	<ul style="list-style-type: none"> <li>• Podar International School 4 min</li> <li>• IIT Powai 7 min</li> <li>• S M Shetty School 8 min</li> <li>• Bombay Scottish School - Powai 15 min</li> </ul>		<ul style="list-style-type: none"> <li>• Central Avenue 7 min</li> <li>• Kensington Business Park 15 min</li> <li>• Seepz 20 min</li> </ul>
	<ul style="list-style-type: none"> <li>• Renaissance Hotel 18 min</li> <li>• The Beatle 30 min</li> <li>• Lakeside Chalet - Marriott 30 min</li> </ul>		<ul style="list-style-type: none"> <li>• Indigo Delicatessen</li> <li>• Breeze</li> <li>• Hoppipola</li> <li>• Rodas</li> <li>• Pizza Express</li> <li>• Chili's American Grill &amp; Bar</li> <li>• Mehman Nawazi</li> <li>• Starbucks</li> </ul>
	<ul style="list-style-type: none"> <li>• Hakone Entertainment Centre 7 min</li> </ul>		

10 - 20 min

Disclaimer: \*Travel Distances as per Google Maps | All points of interest are indicative.



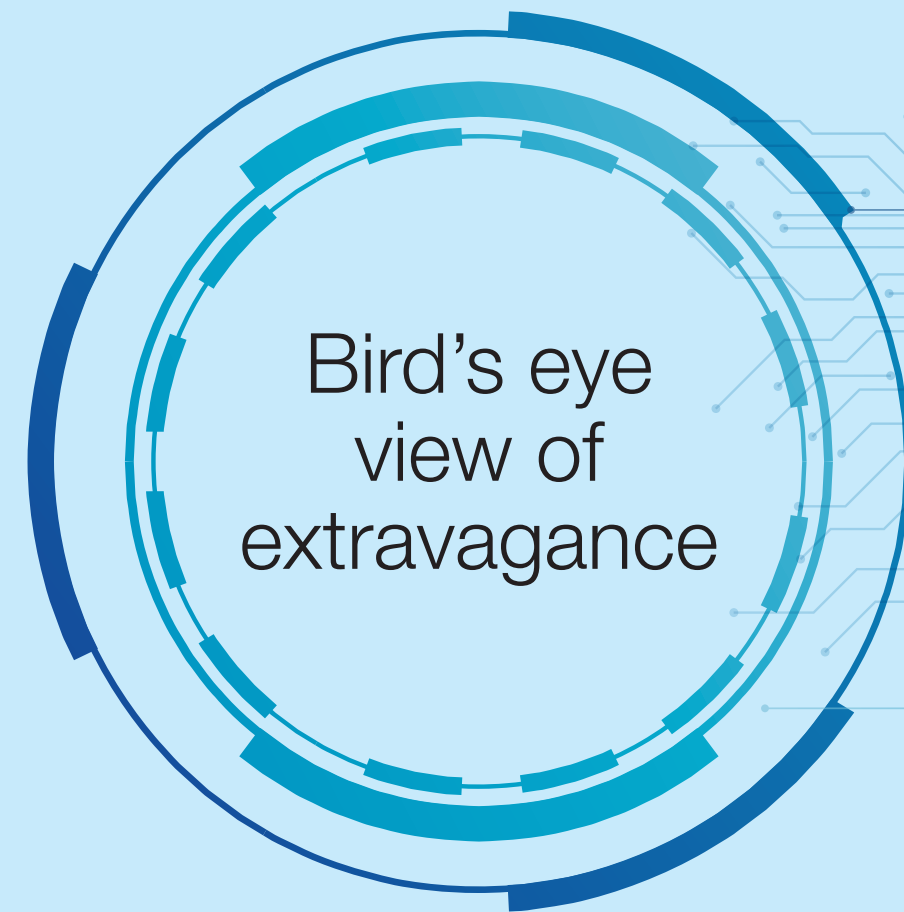
**Actual shot**

Disclaimer: The photographs, images, features, drawings, sketches, renderings, elevation, pictorial, graphical representations, specifications, illustrations, other information etc. contained in these material are for pure imagination and does not represent what will comertin the Project. The city view shown in the printed material is taken from the project location from a height of 90 meter by help of a drone and is not indicative of the actual view that may eventually look from the Flat. The views shown in the picture may vary over period of time and does not guarantee the same. This printed material is for representation purpose only. The location of the other residential structures and public places, etc., shown in the printed material are not been constructed by our Company but are constructed by various other developers and builders who are not connected with our Company. These images of other residential structures and public places are included in the printed material so that prospective buyers get a fair idea of the landscape in and around the general macro-region of the Whole Project. These printed material does not constitute an offer and / or contract of any type between the developer and the Viewer. Any purchaser of this development shall be governed by the terms and conditions of the Agreement for Sale entered into between the parties and no details mentioned in these printed material shall in any way govern such transaction. The Project is mortgaged in favour of IDBI Trusteeship Services Limited for funding by Piramal Capital & Housing Finance Limited and the buyer will be required to obtain a no objection certificate prior to entering in to Agreement for Sale of any unit/flat in the project. \*T&C Apply.

# Timeless Luxury lies in an effortless location

Located at the highest point of Powai, Silicon Valley is Powai's new landmark. It is located in the vicinity of recognised social infrastructure with malls, cinema halls, recreational spots, restaurants, hotels, pubs, community events and more. Silicon Valley is splendidly connected to the rest of the city via both the Western and Eastern Express Highways, other arterial roads, and the Metro Line 6. The close proximity to the airports makes this an extremely sought-after location.





Bird's eye view of extravagance

## Amenities at Level

### Zone 1

- Rock Climbing
- Tennis Court
- Cricket Net

### Zone 2

- Clubhouse 1
- Event Lawn
- Half Basketball Court

### Zone 3

- Tree Nest
- Garden
- Fantasy Land (Toddler Playground)
- Chess Garden
- Leisure Pod
- Galaxy Adventure
- Reflexology Trail
- Butterfly Garden
- Skylight

### Zone 4

- Kids Pool
- Fun Pool
- Kids Splash Island
- Lap Pool
- Pool Deck
- DJ Island
- Amphitheater

### Zone 5

- Jacuzzi
- Artwork Island of the Future
- Yoga area
- Lounge Pool
- Aqua Gym
- Waterfall
- Clubhouse 2
- Plunge Pool
- Spa
- Treatment Pods
- Reflective Pool
- Meditation Deck
- Lounge
- Outdoor Lounge Deck
- Jogging Track
- Sunken Lounge
- Exclusive Drop Off Experience



Representative Image

Artist's Impression

# Silicon Valley homes - Luxurious like your imagination, big like your dreams.

Luxurious living takes on a whole new meaning at the abundantly ventilated and sunlit residences at Silicon Valley. With vast, expansive living spaces, you can fancy a grand piano or your art-deco chandelier, as they fit right in. Decorate your home as you desire, with space at your command, and don't forget to keep that favourite spot for you to soak in the best views of Powai from its highest point. You have walk-in closets, luxury decks, a large kitchen, and everything you wished for.



Optimum Storage Spaces



Spacious Residences



Vitrified Flooring



Imported Marble Flooring  
(In select apartments)



Premium Fittings



Opulent Sanitaryware



Actual Shot of Show Residence

# A lifetime of majestic views, a lifestyle of futuristic views

Sit back, relax, and soak in one of the most breathtaking views the city has to offer. The confluence of mountains, the Powai Lake, acres of greens and the beautiful landscapes of Silicon Valley. This is not just the view of the highest point of Powai, but the very highest point to which Powai gets!



**Actual shot**

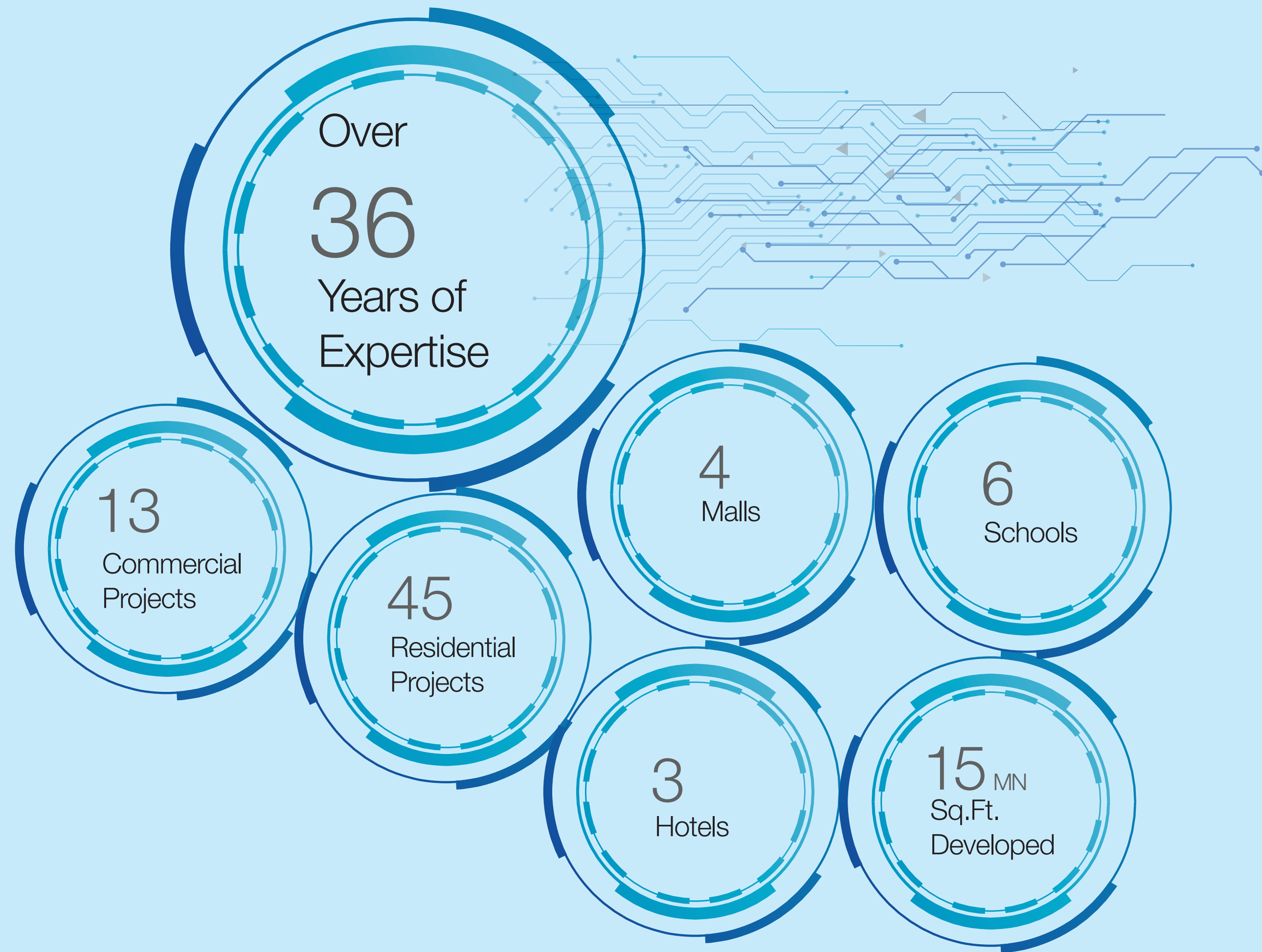
Disclaimer: The photographs, images, features, drawings, sketches, renderings, elevation, pictorial, graphical representations, specifications, illustrations, other information etc. contained in these material are for pure representation and does not represent what will come in the Project. The city view shown in the printed material is taken from the project location from a height of 90 meter by help of a drone and is not indicative of the actual view that may eventually look from the Flat. The views shown in the picture may vary over period of time and does not guarantee the same. This printed material is for representation purpose only. The location of the other residential structures and public places, etc., shown in the printed material are not been constructed by our Company but are constructed by various other developers and builders who are not connected with our Company. These images of other residential structures and public places are included in the printed material so that prospective buyers get a fair idea of the landscape in and around the general macro-region of the Whole Project. These printed material does not constitute an offer and / or contract of any type between the developer and the Viewer. Any purchaser of this development shall be governed by the terms and conditions of the Agreement for Sale entered into between the parties and no details mentioned in these printed material shall in any way govern such transaction. The Project is mortgaged in favour of IDBI Trusteeship Services Limited for funding by Pramal Capital & Housing Finance Limited and the buyer will be required to obtain a no objection certificate prior to entering in to Agreement for Sale of any unit/flat in the project. \*T&C Apply.



Beyond the doors  
the future awaits you



SHOT AT LOCATION



## The **KANAKIA** difference

Challenging the norm requires great courage and absolute conviction. At Kanakia, we have always encouraged 'different thinking' when it comes to spaces and that is why today, we are recognised as one of India's most premium developers and are also featured amongst the leading real estate development brands in the country.

Established in 1986, Kanakia Spaces Realty Pvt. Ltd. is Kanakia Group's flagship real estate company. In the last 3 decades, we have developed and successfully delivered 14.6 million sq.ft. of commercial, residential, entertainment, education and industrial spaces. Standing testament to our innovative approach such as the first township concept at Mira Road, and many of our prestigious themed properties like Kanakia Rainforest, Kanakia Paris, Kanakia Miami, Kanakia Hollywood, Kanakia Zen World and Kanakia Wall Street.